



Bilingual Education:

**Dual Language Programs as a Pathway
to High Achievement**

Dual Language:

- **Dual language refers to an instructional program that provides literacy and content instruction to all students through two languages and that promotes bilingualism and biliteracy, grade-level academic achievement, and multicultural competence for all students.**

Two-Way Bilingual Classroom

Primary
English
Speakers

50%
CLASSROOM

Students Learn
From Each
Other

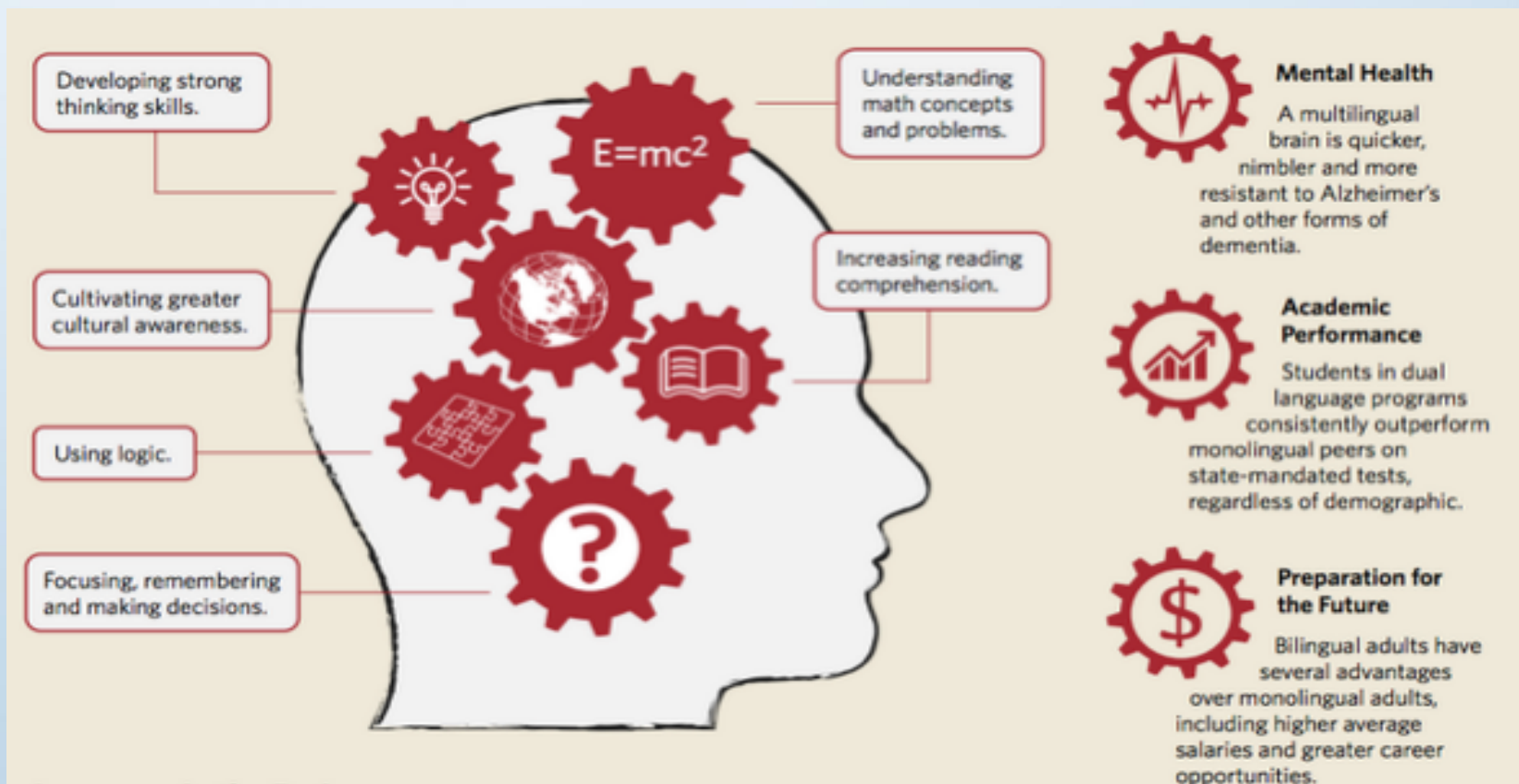


Primary
Spanish
Speakers

50%
CLASSROOM

Bilingual &
Biliterate
Teachers

BENEFITS OF BILINGUALISM



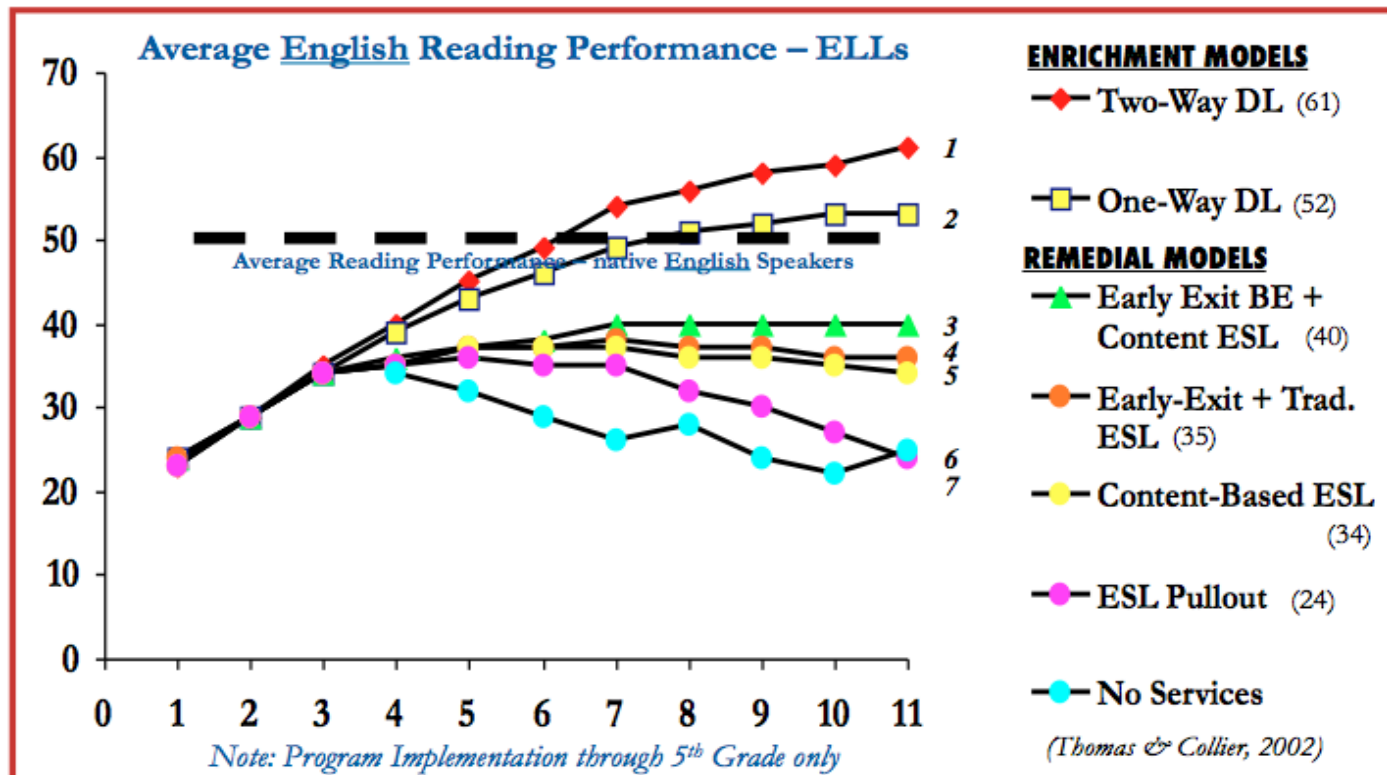
High Achievement Through Bilingual Education

What the Research Says about Cross-linguistic Transfer:

There is a positive transfer between L1 and L2 in several areas: phonemic awareness; decoding through phonics and word recognition strategies; use of cognates and general comprehension strategies.



PATTERNS OF LOW-SES ELLs' LONG-TERM ACHIEVEMENT IN ENGLISH READING ON STANDARDIZED TESTS (similar pattern for each SES group)



Study included over 700,000 minority language students in 5 large districts across the country. Findings were validated by comparing to school systems in 26 states during the following 2 years.



Key Point:

Since students in dual language programs are learning in two languages, their literacy trajectory at 3rd grade is slightly slower in developing than peers in English-only instruction. However, in 5th grade and beyond, learners in dual language programs outperform their peers on academic assessments in English (Escamilla et al., 2013; Genesee, Lindholm-Leary, Saunders, & Christian, 2006; Swenson & WatzingerTharp, 2012; Thomas & Collier, 2002).

OSPI Menu of Best Practices Highlights: English/Language Arts

- When English Learners become literate in both their native language and English, they outperform peers in English-only instruction on standardized tests in English.
- Implementing a two-way dual language core instruction program builds upon the bilingual assets of English Learners.
- It is recommended to hire certificated staff with an EL or Bilingual Education endorsement to design and provide language instruction for English Learners. Whenever possible, hire biliterate teachers who are qualified to provide instruction in the student's native language and English.



Bilingual Education Social/Emotional Benefits

**School Culture of Respect and Acceptance
Pride in Native Culture and Language
Sense of Belonging for All Students
Multicultural/Global Perspective
Strengths-Based Approach to Learning**

Woodland Public Schools: Key Considerations

Curriculum

- Current Adopted Curricula in Spanish
- Professional Learning for Educators

Hiring

- Early Recruitment
- Multi-Year Plan for Program Progression

Community Engagement

- Education Regarding Benefits
- Input in Program Criteria

Support Partners

- OSPI
- Washington State University-Vancouver
- Evergreen Public Schools
- WABE (Washington Association of Bilingual Education)

Woodland Public Schools Vision

Woodland Public Schools, in partnership with families and the community, will create a PreK-12 system that serves and supports ALL children and ensures that EACH child has FULL access to, is engaged in, and obtains an excellent education that prepares them for responsible citizenship and a future of adaptability and success in life and their chosen endeavors.



Dual Language Programs:

Equity

Opportunity

High Achievement

Educational Excellence

